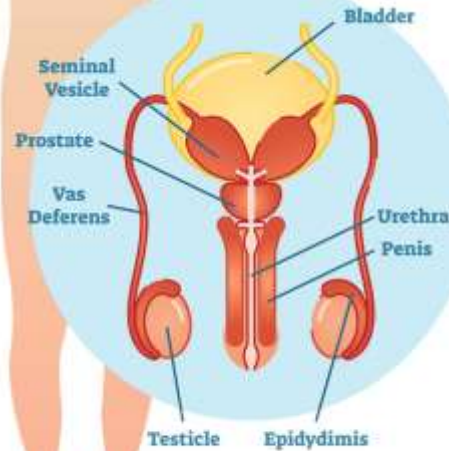


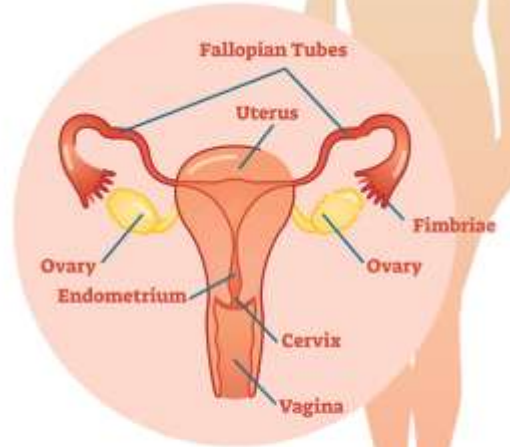
# Review: Reproductive System

## HUMAN REPRODUCTIVE SYSTEM

### Male Organs

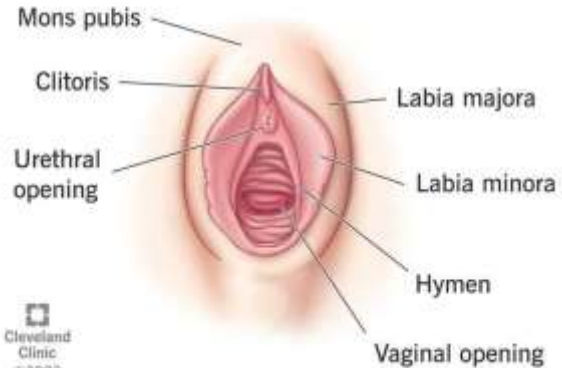
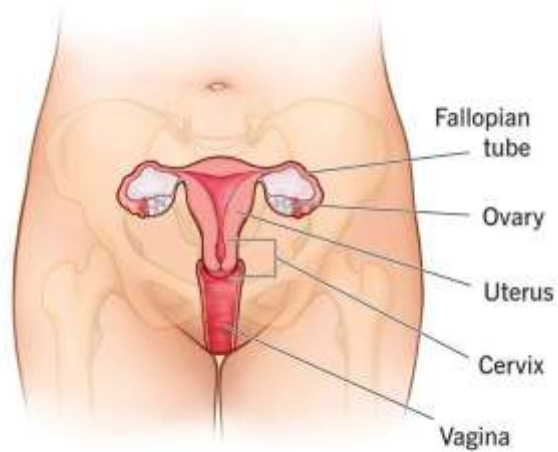


### Female Organs



## Female reproductive system

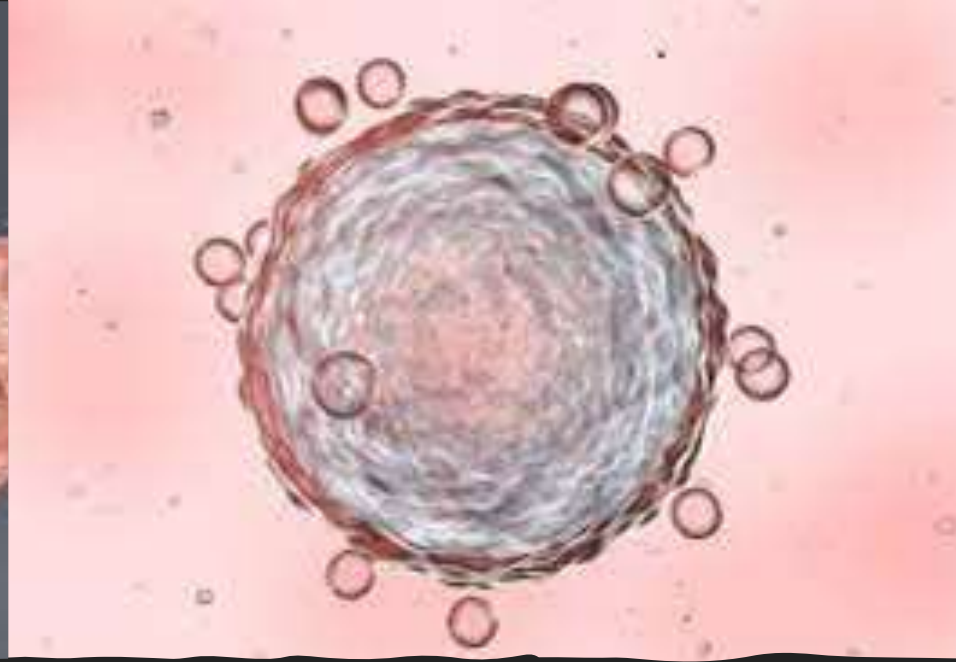
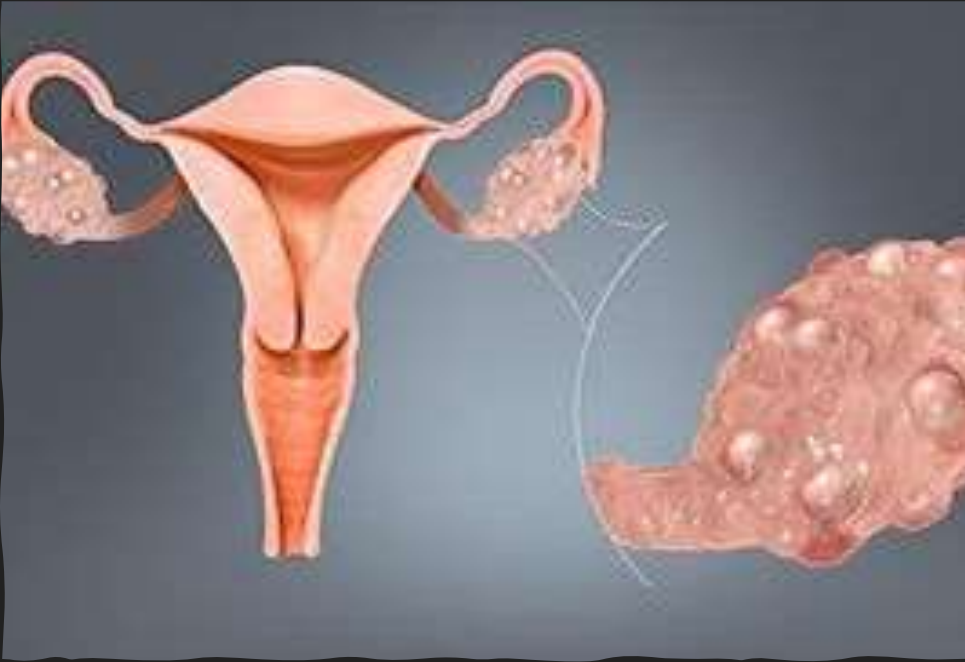
*Internal and external*



# Female Reproductive System

The female reproductive system consists of:

**the ovaries, fallopian tubes, uterus, vagina, and vulva**



# Ovaries

Two organs the size of an almond. In them, eggs, which are the reproductive female cells, are formed and matured.

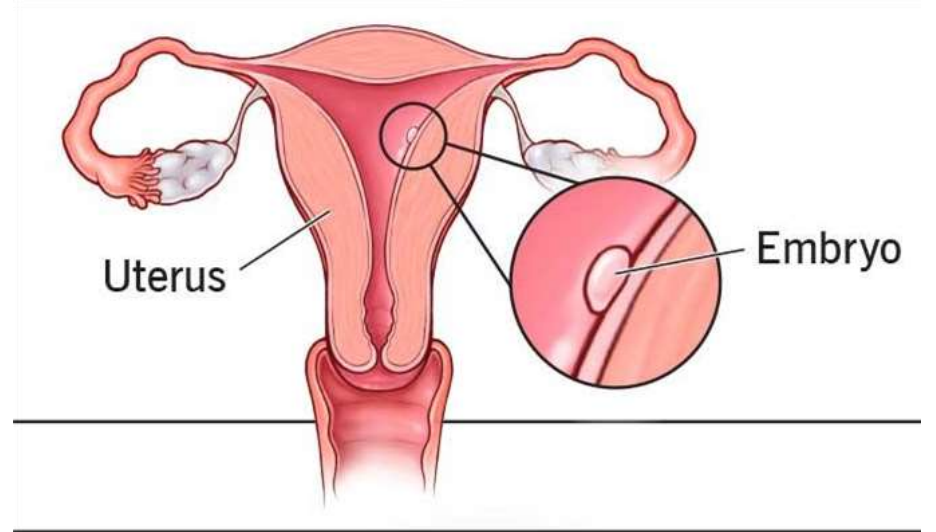
# Fallopian Tubes

A tube that connects the ovaries, where the body makes eggs, to the uterus, where a fertilized egg can become a fetus.



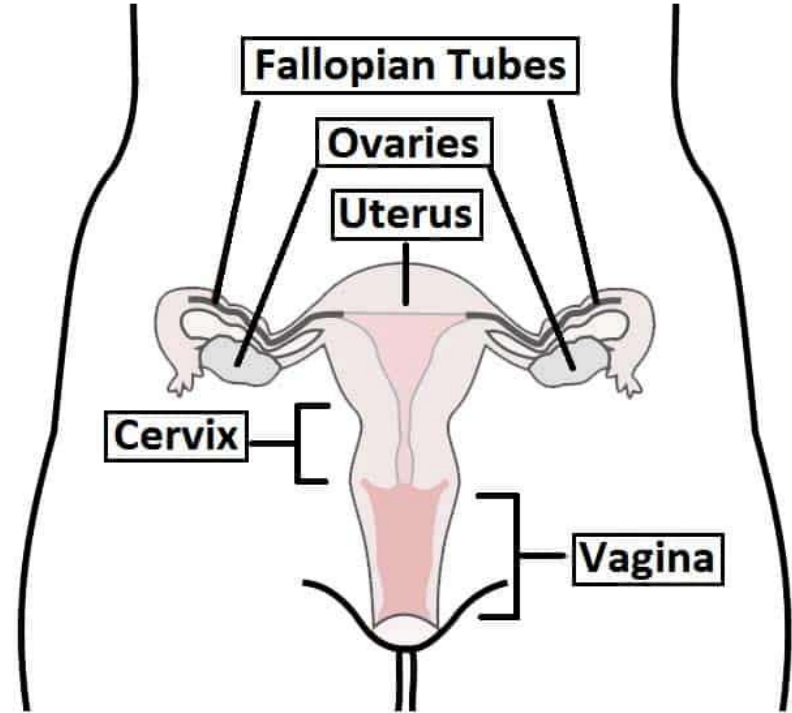
# Uterus

Cavity with thick muscular walls. Where a baby develops.



# Vagina

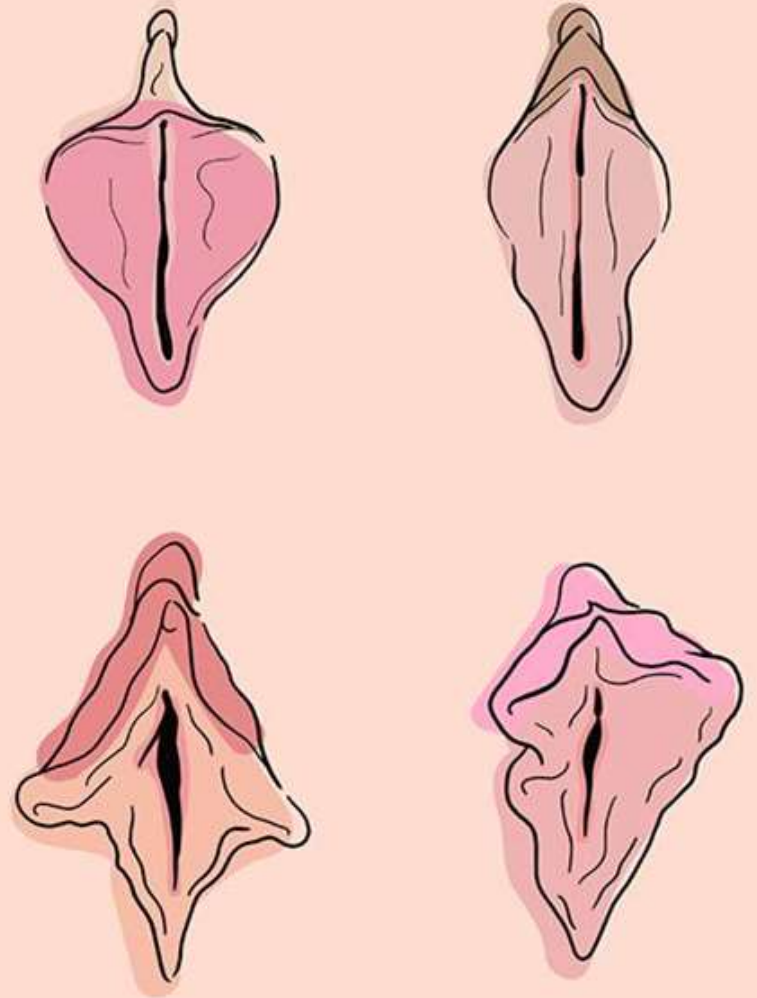
Connects the uterus with the outside



# Vulva

---

External part of the reproductive system. Formed by a set of folds that protect the entrance to the vagina.

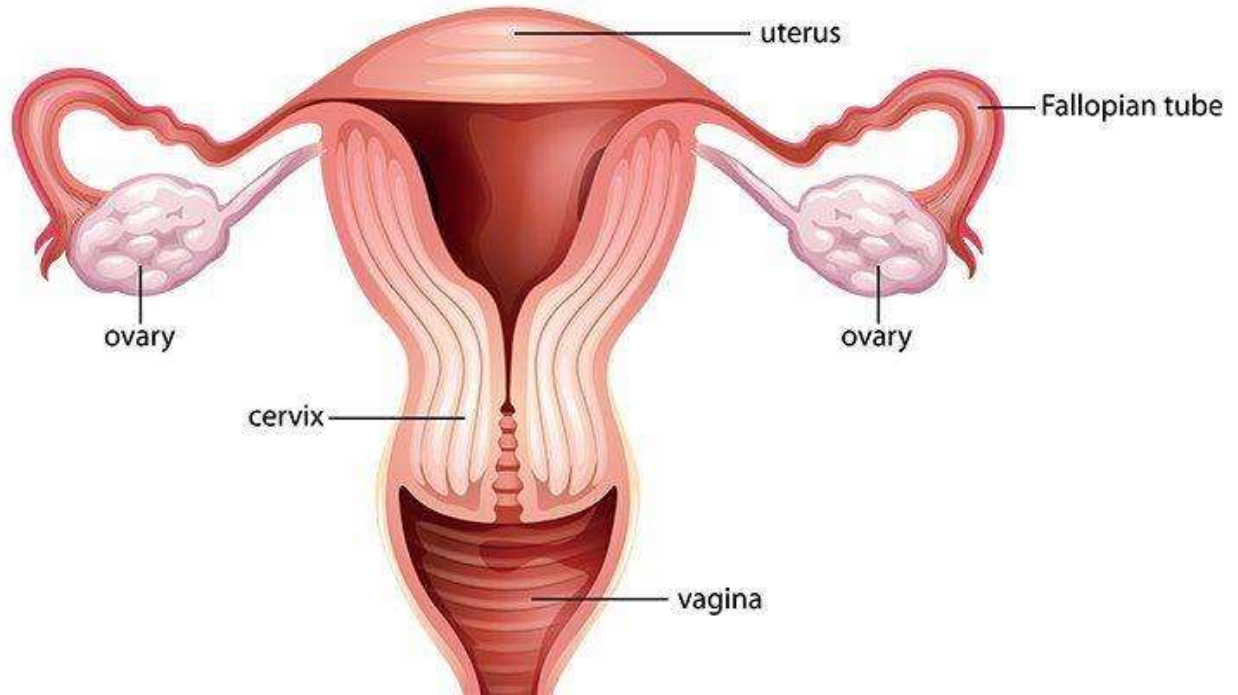


# Female Reproductive System: Internal Organs

---

The internal organs of the female reproductive system are:

- **The fallopian tubes**
- **The ovaries**
- **The uterus**
- **The vagina**

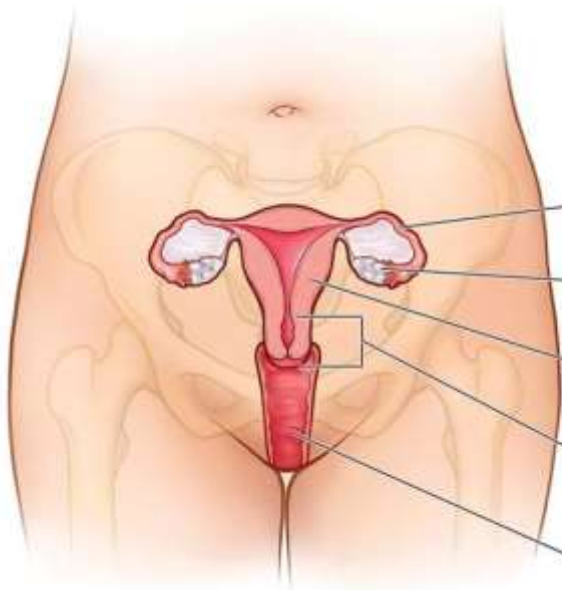




## Female Reproductive System: Internal Organs (Match!)

The internal organs of the female reproductive system are:

- The fallopian tubes
- The uterus
- The vagina
- The ovaries
- The cervix

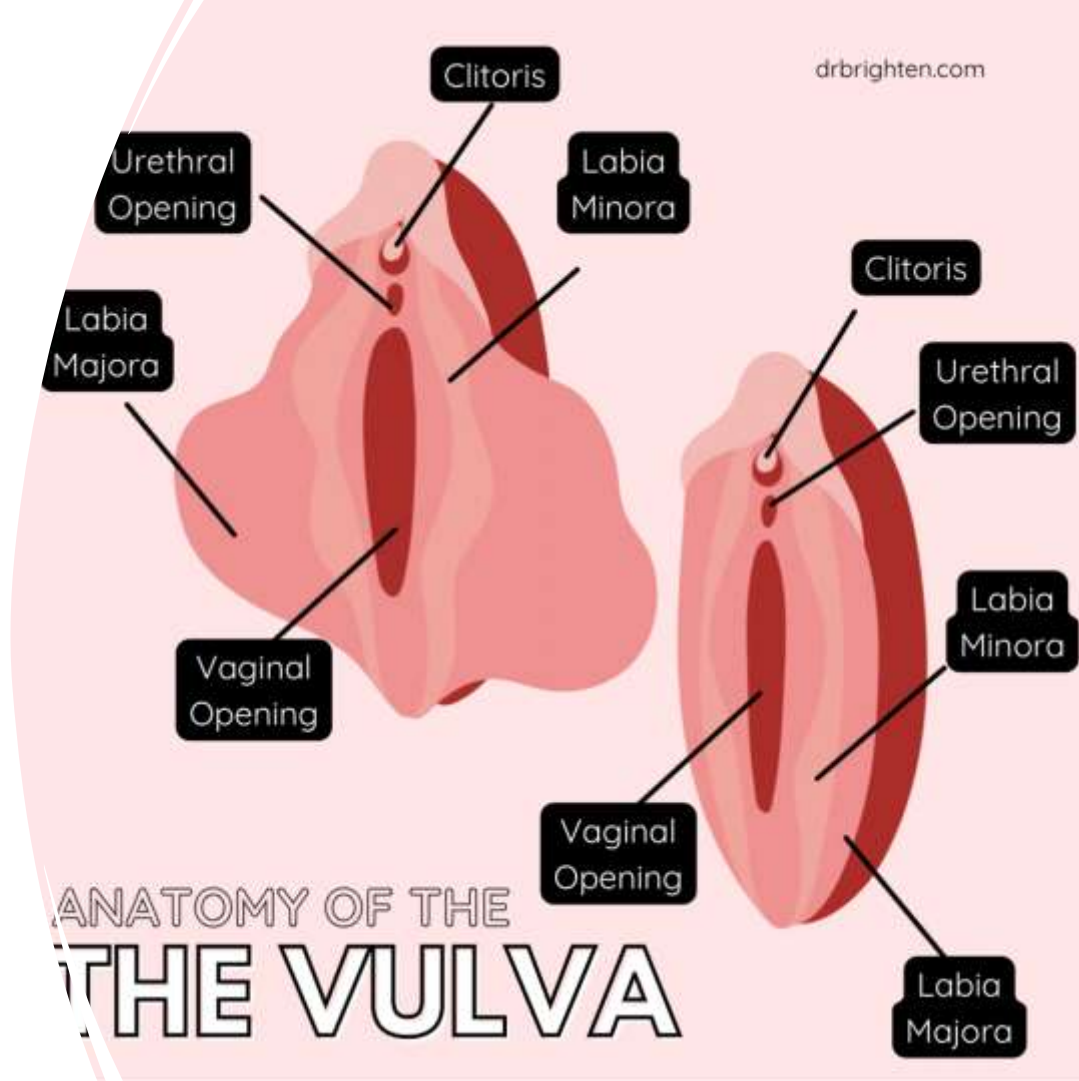


# Female Reproductive System: The Vulva

---

The vulva is the external organ of the female reproductive system, and it consists of:

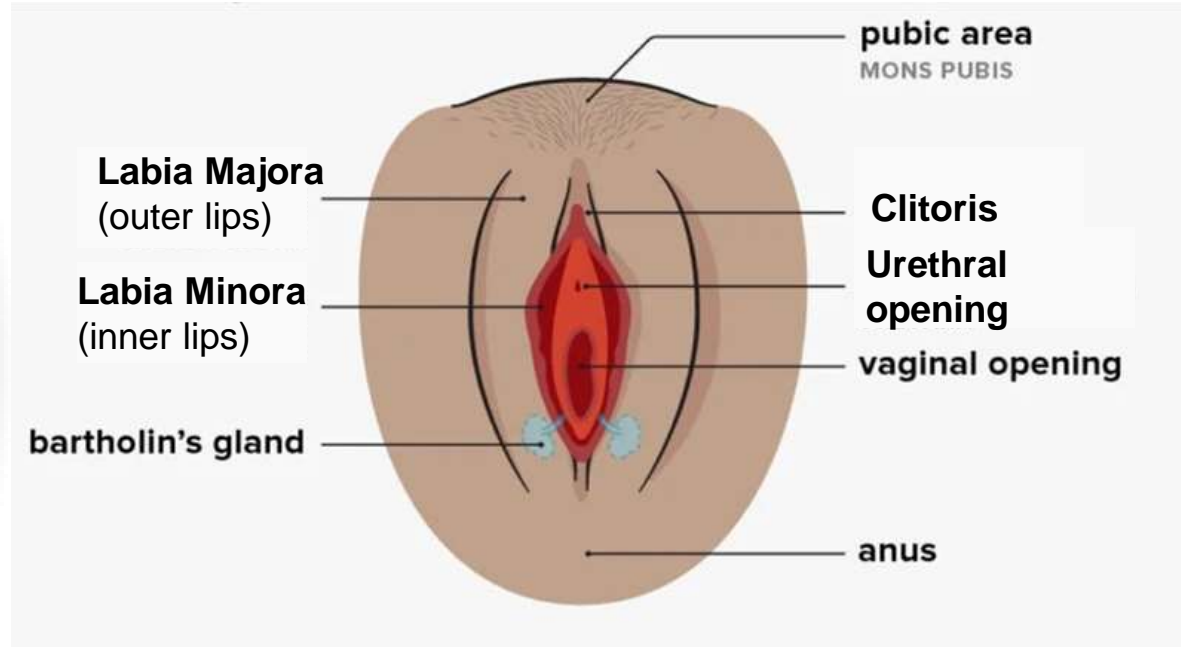
- **Labia minora (inner lips)**
- **Labia majora (outer lips)**
- **Clitoris**
- **Urethral Opening**



# Female Reproductive System: The Vulva (Label!)

The vulva is the external organ of the female reproductive system, and it consists of:

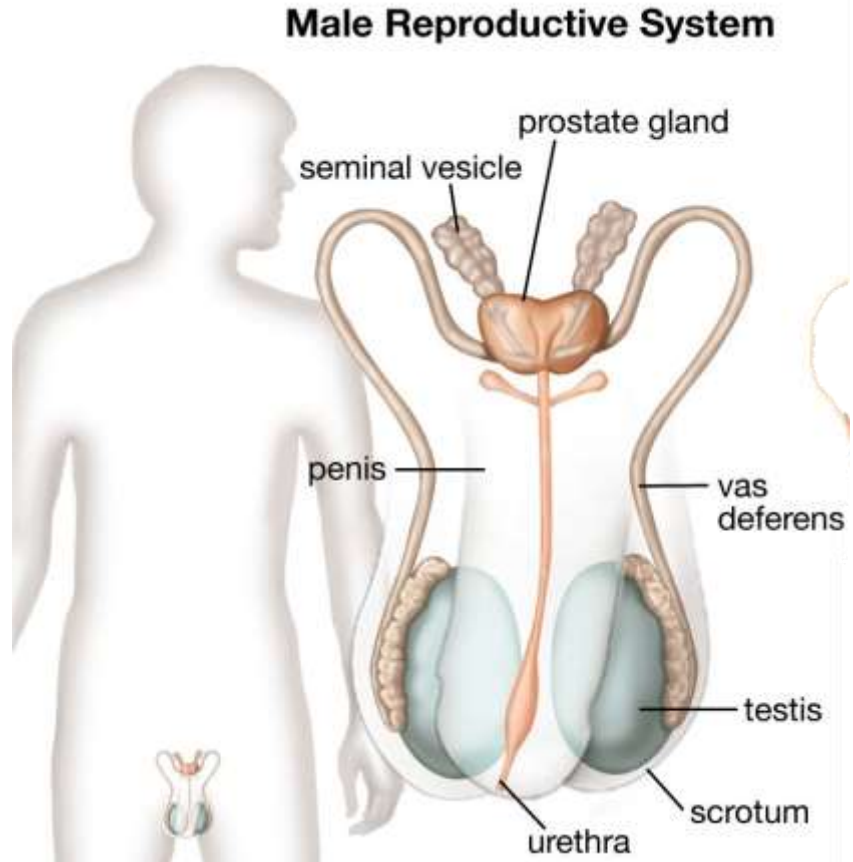
- **Labia minora (inner lips)**
- **Labia majora (outer lips)**
- **Clitoris**
- **Urethral Opening**



# Male Reproductive System

The male  
reproductive system  
consists of:

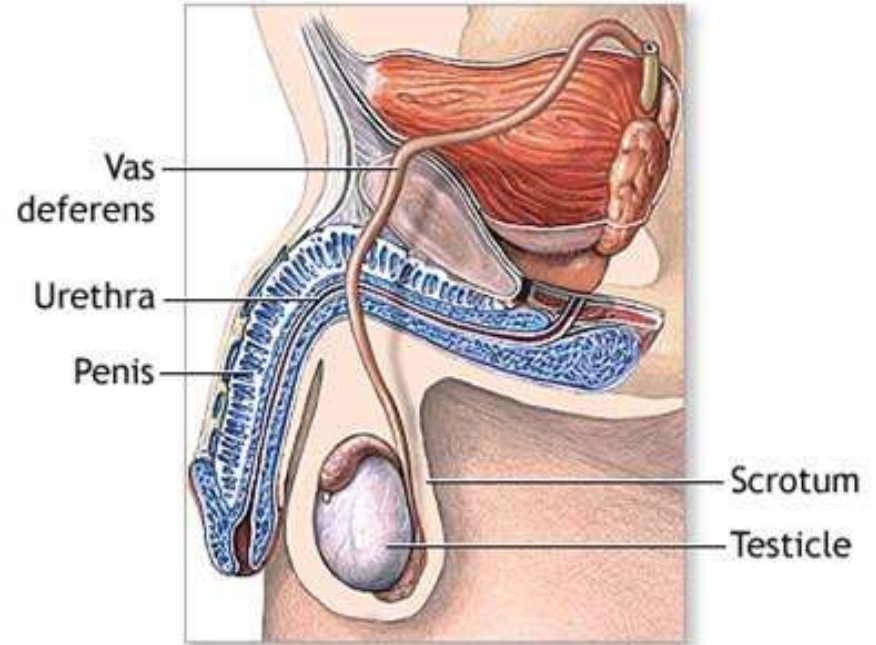
**vas deferens,  
seminal vesicles,  
urethra, the  
testicles, and penis**

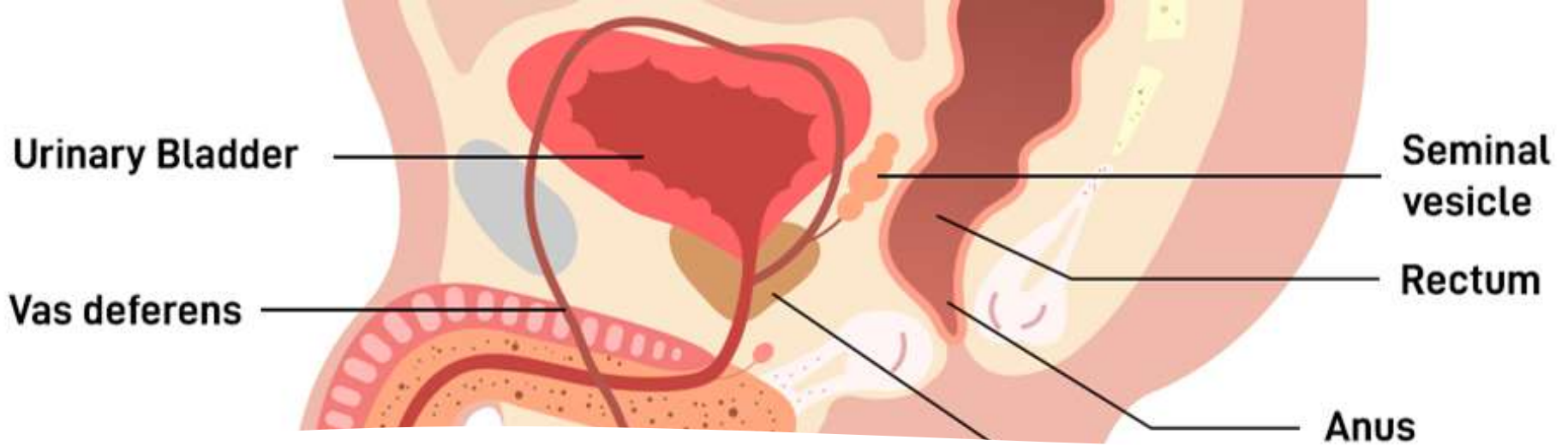


# Vas Deferens

---

Two very thin ducts.  
Collect sperm from the  
testicles and transport it to  
the urethra.



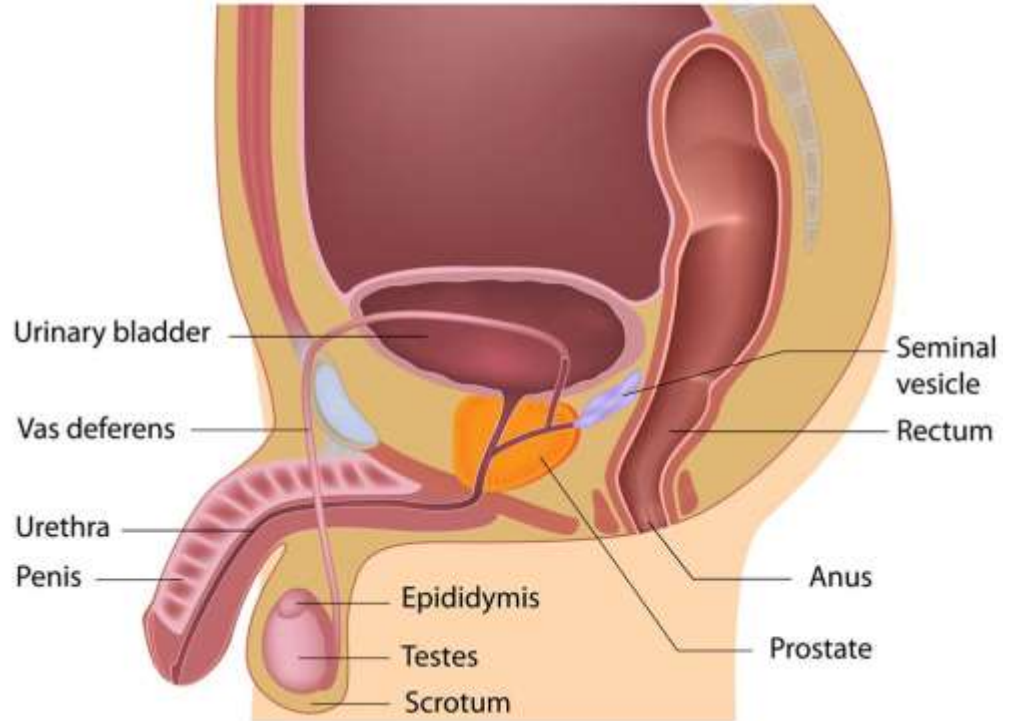


## **Seminal Vesicles**

Two glands located behind the urinary bladder, which produce seminal fluid and pour it into the urethra.

# Urethra

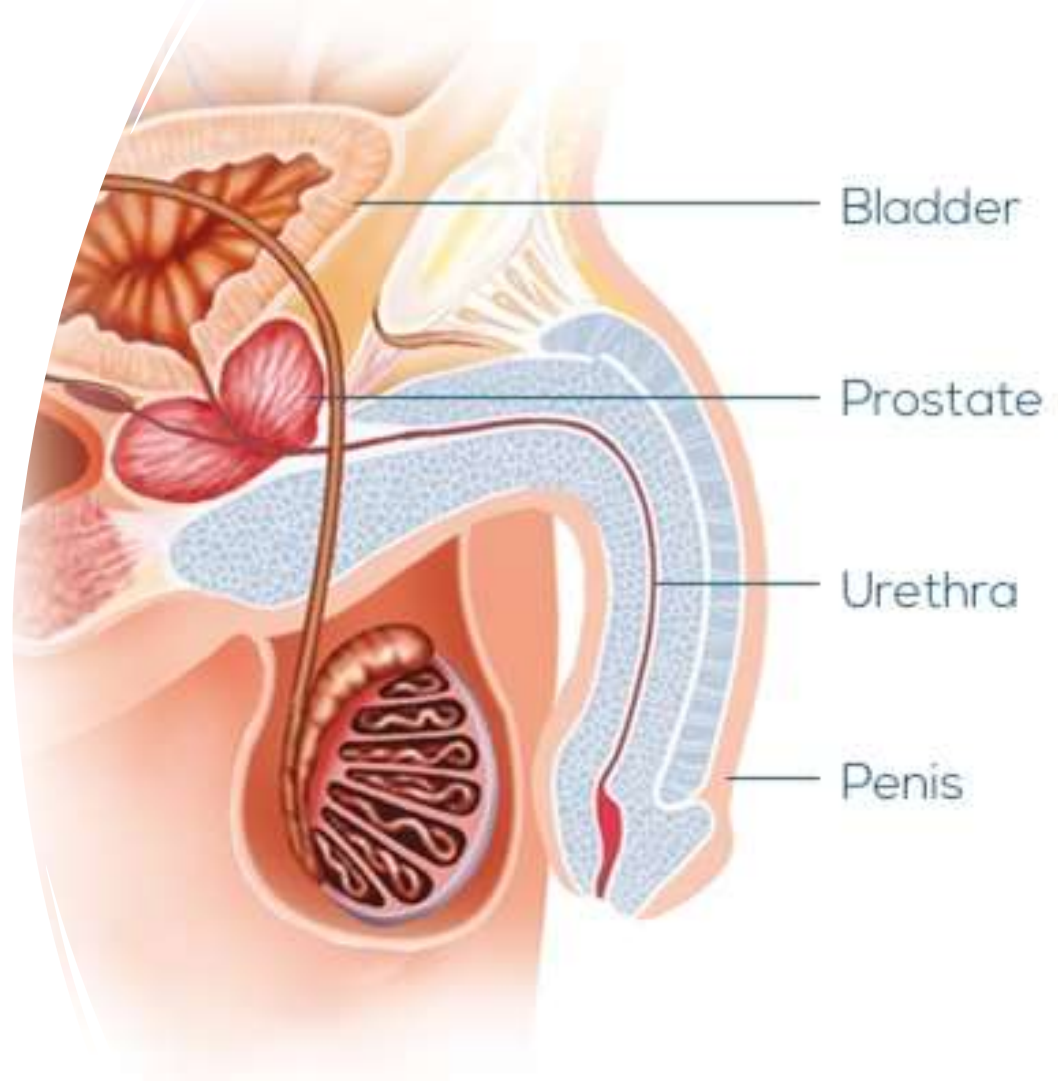
A tube through which sperm leaves the body along with seminal fluid. Also connects the urinary bladder to the outside to allow the exit of urine.



# Penis

---

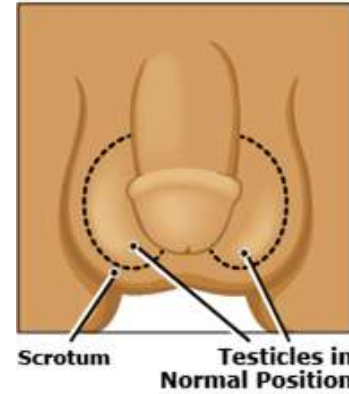
It is the most external part.  
Contains the urethra.



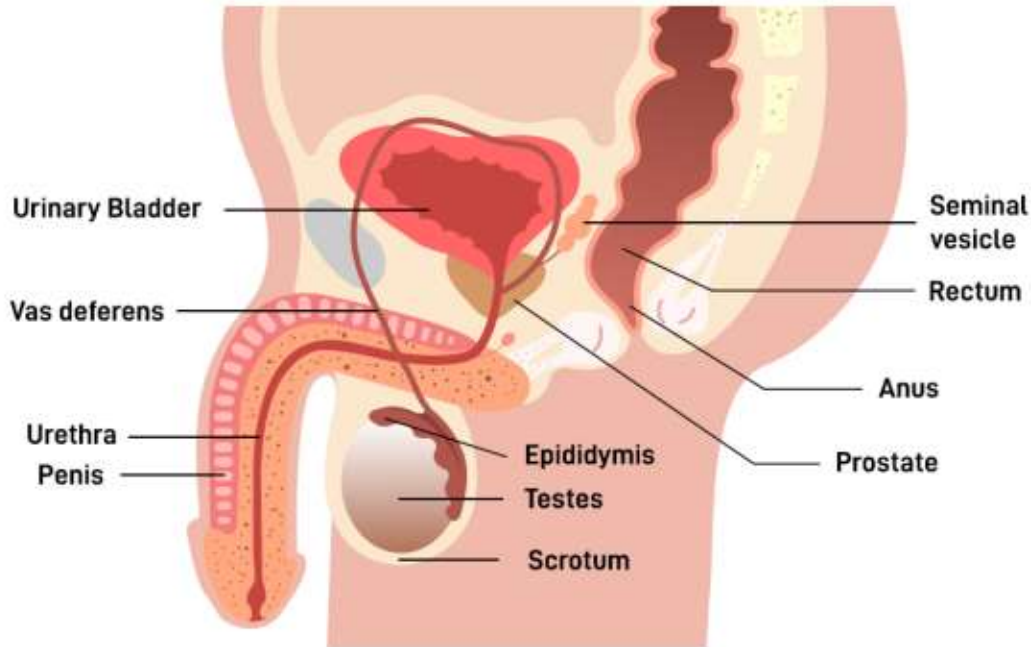


# Testicles

Two external organs. Covered by a fold of skin called the scrotum. Responsible for producing sperm cells, which are male reproductive cells.



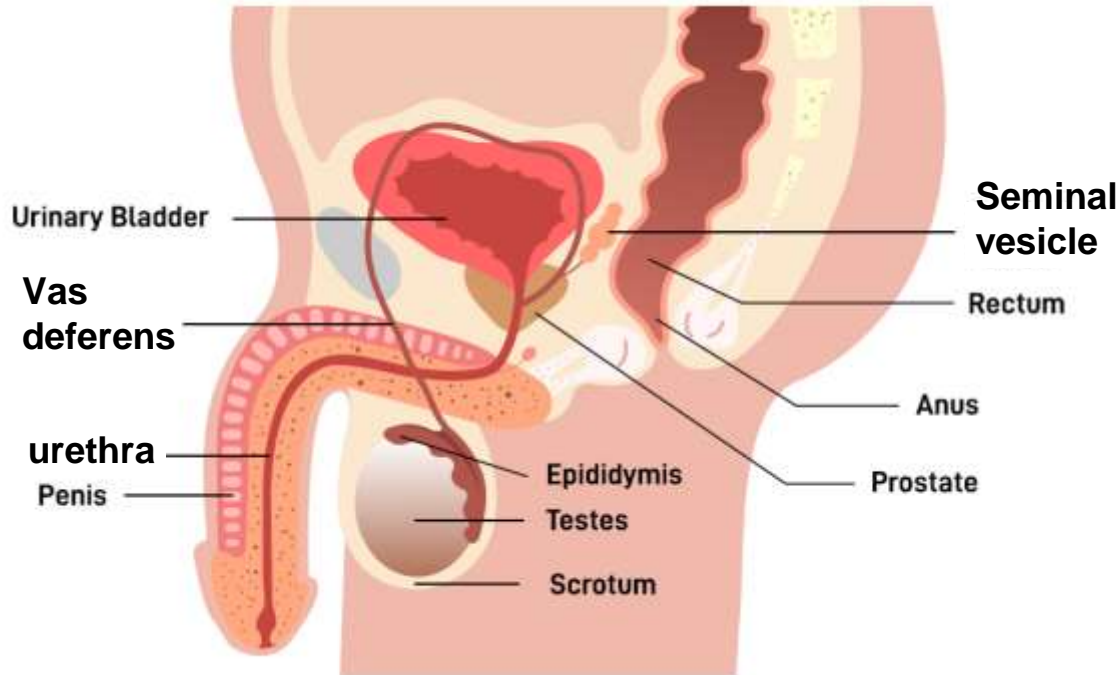
# Male Reproductive System: Internal Organs



The internal organs of the male reproductive system are:

- **The vas deferens**
- **The seminal vesicles**
- **The urethra**

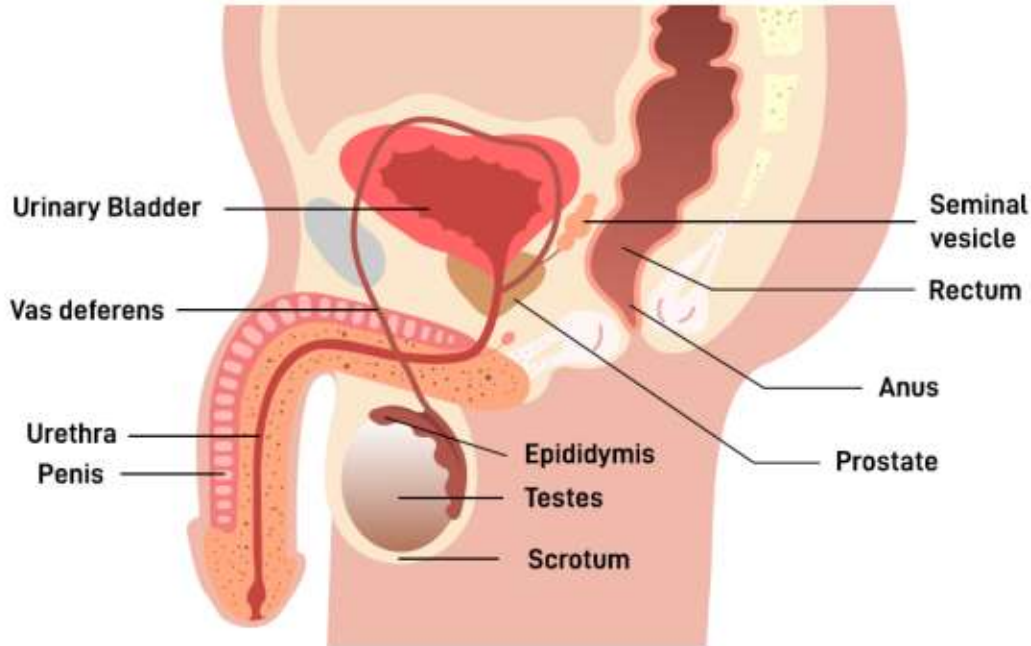
# Male Reproductive System: Internal Organs (Label!)



The internal organs of the male reproductive system are:

- **The vas deferens**
- **The seminal vesicles**
- **The urethra**

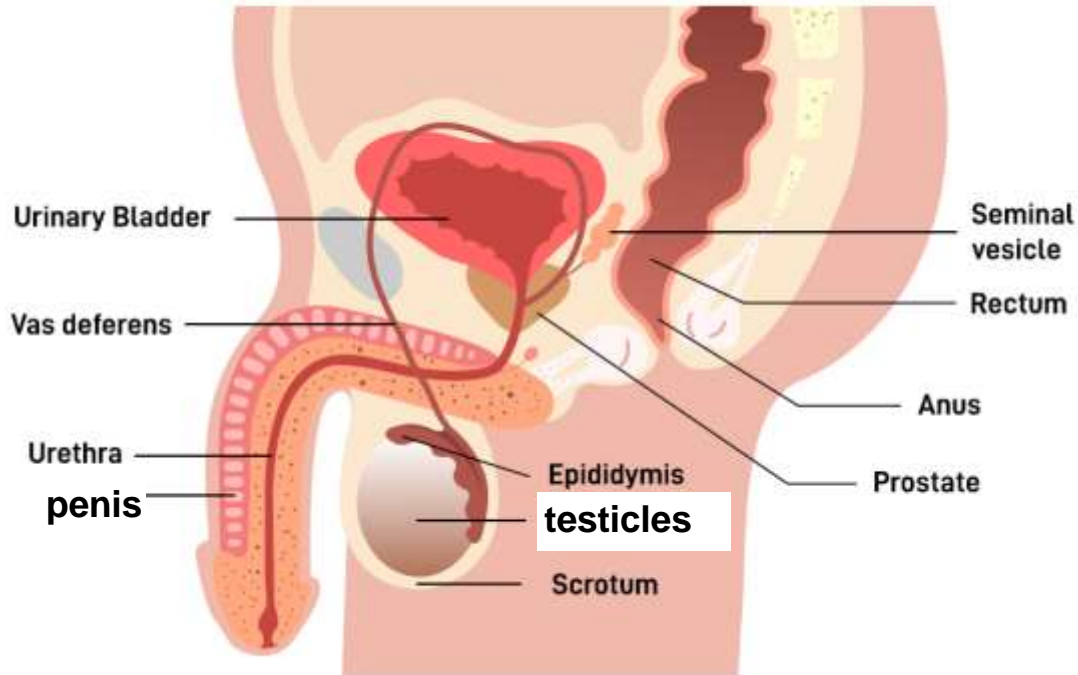
# Male Reproductive System: External Organs



The external organs of the male reproductive system are:

- **The penis**
- **The testicles**

# Male Reproductive System: External Organs (Label!)



The external organs of the male reproductive system are:

- **The penis**
- **The testicles**